

Manufacturer
Dyna Comp. inc.

Specifications:
COMPONENT TYPE
CUSTOM RECTIFIER
INPUT: 240 VAC
50HZ
MAX INPUT:
70W ~ CONT
+5V @ 4A
+12V @ 1A / 1.8PK
-5V @ .25A
-12V @ .25A

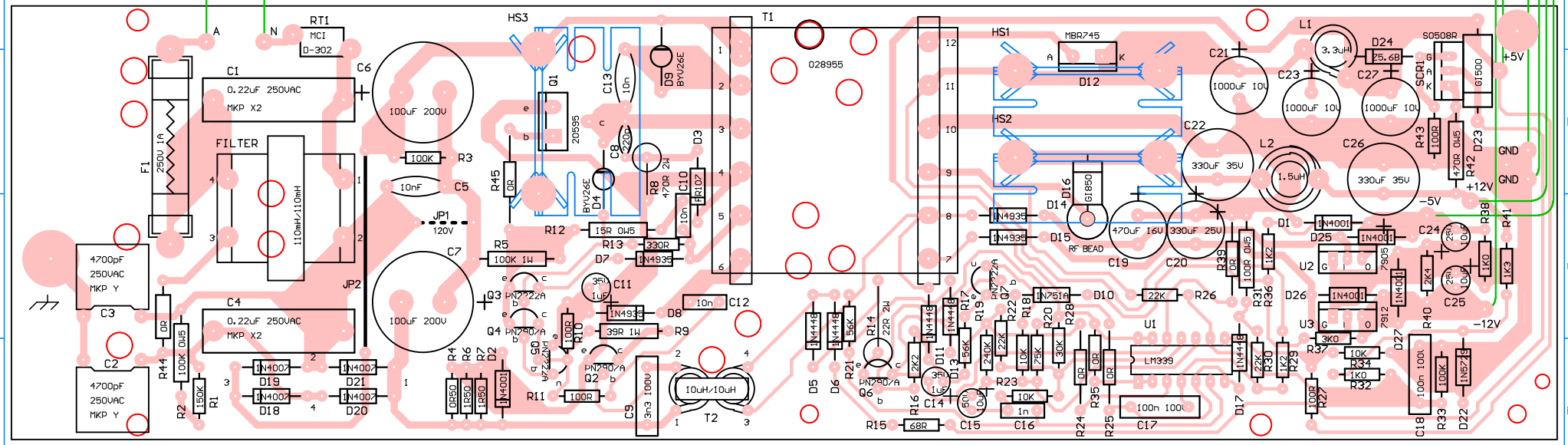
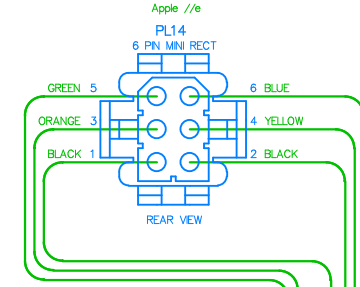
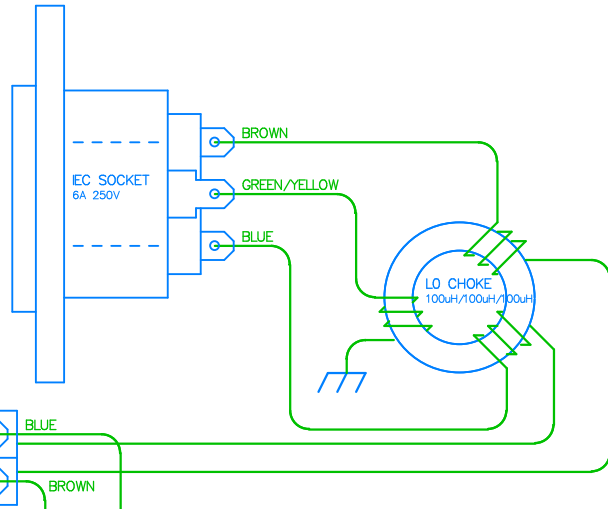
Component Notes:

C6, C7 100uF 200V (ESR < 0.8 Ohms)
 C11, C14 1uF 35V (ESR < 4.0 Ohms)
 C15 10uF 50V (ESR < 1.9 Ohms)
 C19 470uF 16V (ESR < 0.2 Ohms)
 C20 330uF 25V (ESR < 0.3 Ohms)
 C21, C23, C27 1000uF 10V (ESR < 0.1 Ohms)
 * C21//C23 (parallel ESR < 0.05 Ohms)
 C22, C26 330uF 35V (ESR < 0.15 Ohms)
 C24, C25 10uF 25V (ESR < 1.5 Ohms)
 F1 1A 250V Slow Blow 3AG pigtail
 RT1 NTC MCI D-302, ~35 Ohms @ 25C

Acceptable ESR reading

Component Variants

C5	10nF (240V)	not fitted (120V)
C11, C14	1uF 35V	1uF 50V
R33	100K	not fitted
R34	10K	not fitted
JP1	not fitted (240V)	fitted (120V)
Q1	20595	MJE18006



NOTE: Tracks are for reference only.
 Track widths are not-to-scale.
 Pads are not-to-scale.
 Component placement is +/- 50mil

Report errors to: apple.ieegs@gmail.com

Title Apple //e Dyna Comp Power Supply		
Size A4	Number Apple MODEL NO: 699-0136	Revision 2.0
Date: 26 Jan 2020		Sheet 1 of 1
File: DYNACOMP.PCB		Drawn By: Mark Cummings
Protel for Windows v1.1		Checked By: Dean Claxton